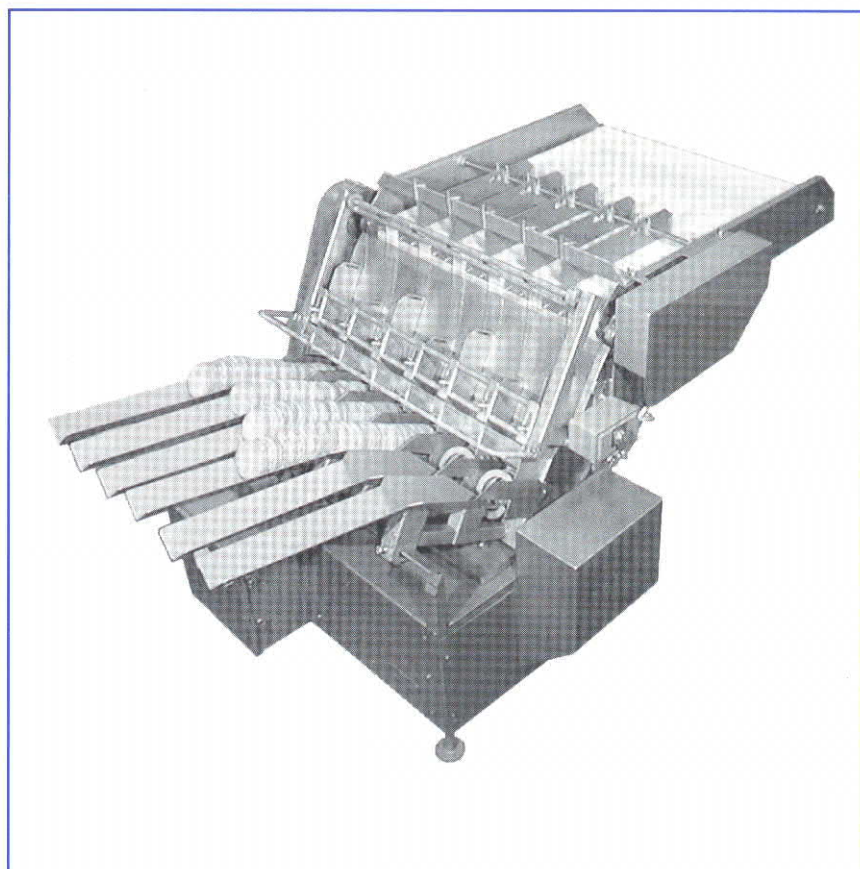


..... *Patty Stacker*

Features

- Automatically stacks frozen patties, greatly reducing pack-off labor.
- Stacks patties from the fastest former - up to and beyond 90 strokes per minute.
- Field proven - hundreds in operation in many different applications.
- Stacks a wide variety of shapes and sizes, with or without paper interleaving.
- Quick change, custom trough assemblies allow the stacker to switch from one patty style to another in minutes.
- Variable speed drive for different line speeds.
- Stainless steel construction.
- Continuous welds.
- USDA accepted.



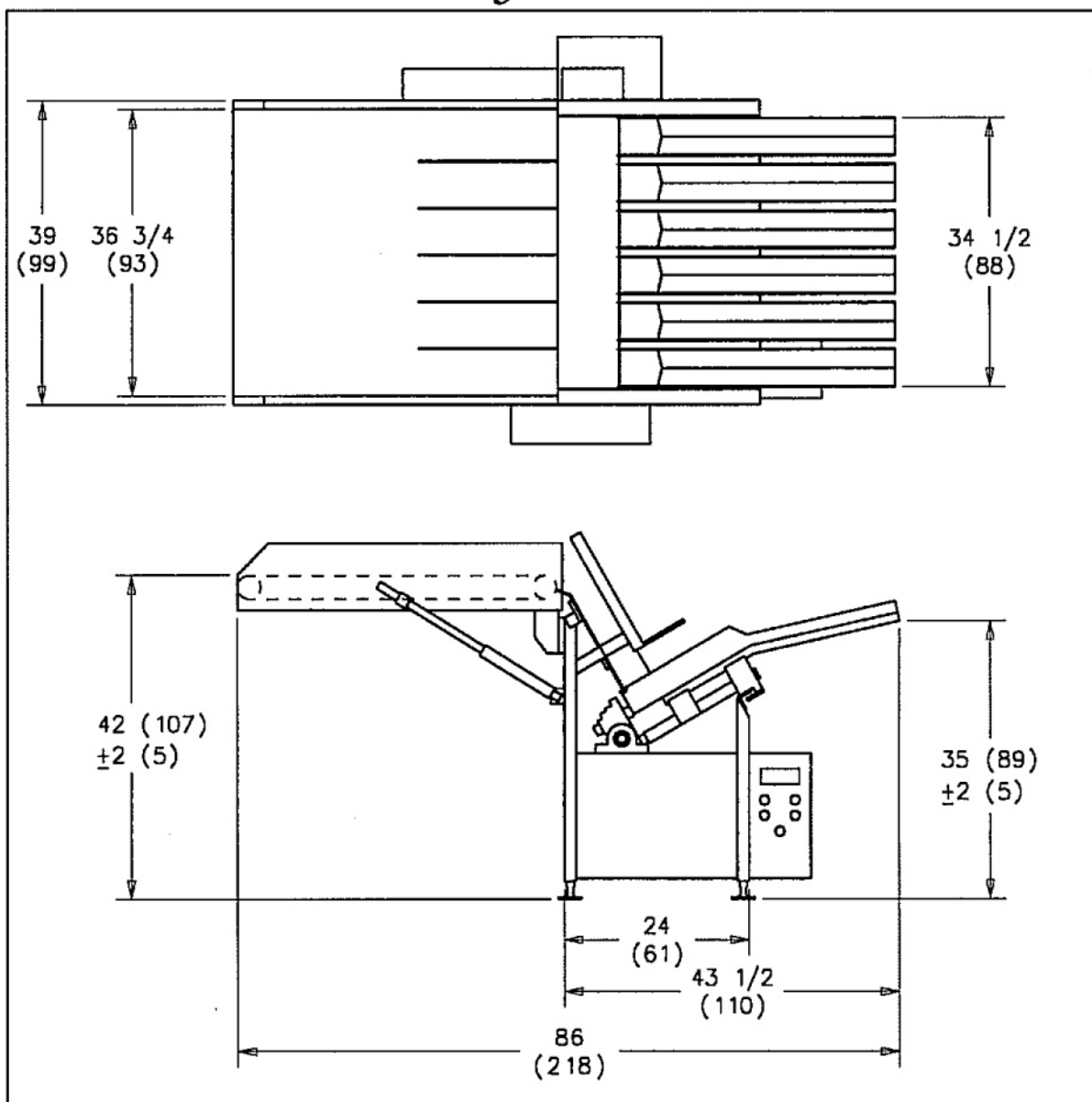
RMF manufactures high performance stainless steel processing and material handling equipment for the food industry. Product line includes: dumpers, screw and belt conveyors, hoppers, platforms, storage loaders, patty stackers, vacuum packaging equipment, mixer/blenders, Challenge-RMF Vacuum Meat Massagers/Marinaters, and industrial microwave tempering and cooking equipment. RMF has over twenty-five years of experience supplying turn-key processing systems. Our 120,000 square foot facility is large enough to lay-out complete systems for inspection prior to shipment. We also offer complete job shop services.

RMF Steel Products Co.

4417 East 119th Street • Grandview, MO 64030
(816) 765-4101 • Fax (816) 765-0067
www.rmsteel.com

TECHNICAL SPECIFICATIONS

Patty Stacker



INCHES (CENTIMETERS)

ELEC. REQUIREMENTS: 230/460 VAC, 3 PHASE, 60 HZ., 15 AMP

MOTOR: 0.75 HP (0.6 KW)

AIR REQUIREMENTS: 90 PSI @ 2 CFM (620 kPa @ 940 cm³/sec)

RMF RESERVES THE RIGHT TO CHANGE SPECIFICATIONS
AND DESIGNS WITHOUT NOTIFICATION.



RMF Steel Products Co.

4417 East 119th Street • Grandview, MO 64030
(816) 765-4101 • Fax (816) 765-0067